



Forest Drive, Theydon Bois, CM16

BUTLER & STAG



A newly refurbished two bedroom apartment situated of the first floor of this secure modern development, in the heart of Theydon Bois village.

Accessed via a secure entrance, the apartment is ideal for working professionals for its convenient access to Theydon Bois Station (Central Line) or older tenants wanting an apartment close to the station, shops and amenities.

Accommodation comprises, large living room, newly fitted kitchen, two bedrooms, master with en-suite shower room, main bathroom and a gated off street parking space.



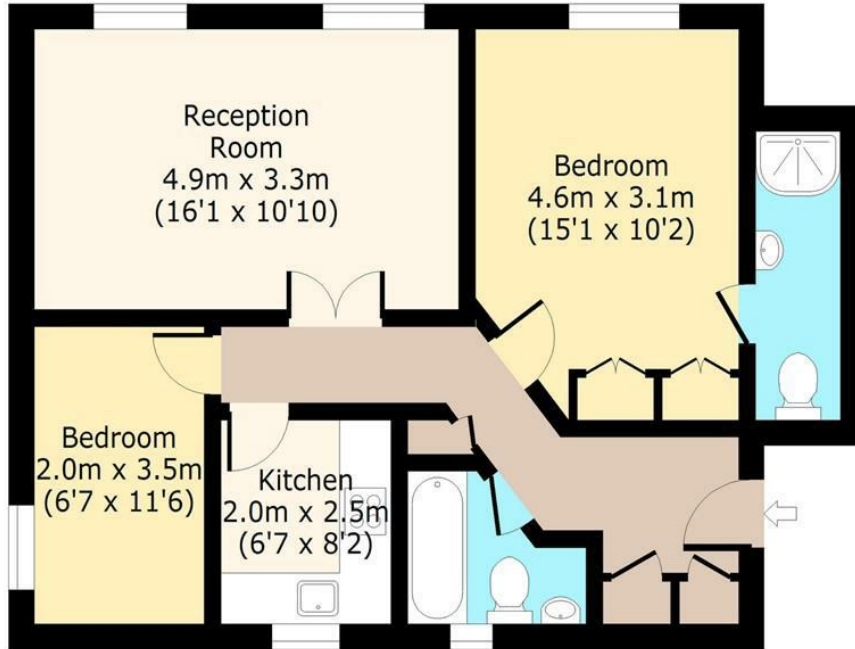
- Gated Development
- Secure Off Street Parking
- Close to Station & Amenities
- Newly Refurbished
- Two Bedrooms/ Two Bathroom
- Available First Week Of October





The Heights, First Floor

Approx. 62.15 Sq. meters (669 Sq. feet)



Total area: approx. 62.15 Sq. meters (669 Sq. feet)
For illustration purposes only - not to scale
www.londonpropertyassessments.co.uk

BUTLER & STAG

☎ 01992 667666

🏠 4 Forest Drive, Theydon Bois, Essex, CM16 7EY

✉ theydon@butlerandstag.com

www.butlerandstag.uk

IMPORTANT NOTICE - These particulars have been prepared in good faith and they are not intended to constitute part of an offer or contract. We have not performed a structural survey on this property and the services, appliances and specific fittings have not been tested. All photographs, measurements, floor plans and distances referred to are given as a guide and should not be relied upon.